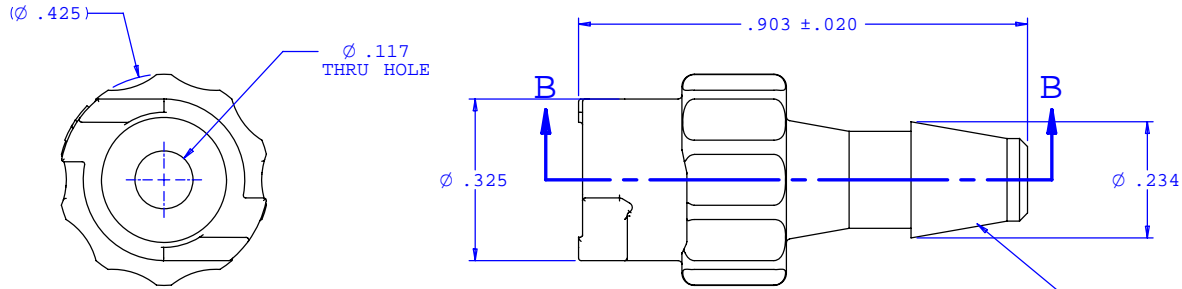
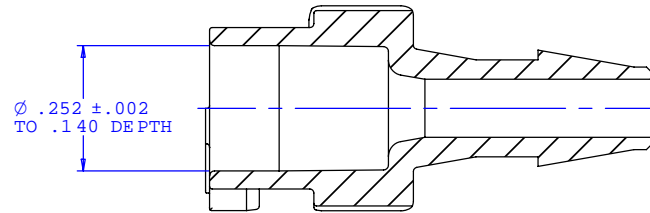


NOTE: FOR MORE DETAILS SEE YOUR V.P.CUSTOMER SERVICE REP.

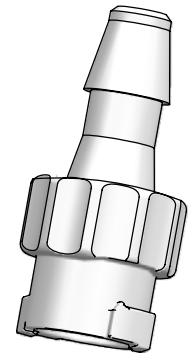
REVISIONS			
REV.	DESCRIPTION	DATE	APPROVED
A	INITIAL RELEASE	02-24-07	SNR



INSTRUMENT QUALITY PART. NO PARTING LINE PERMITTED ON THIS CONICAL SURFACE



SECTION B-B



UNLESS OTHERWISE SPECIFIED DIMENSIONS ARE IN INCHES TOLERANCES ARE:		VALUE PLASTICS, INC.		
FRACTIONS ±	DECIMALS .XX ±.01 .XXX ±.005 .XXXX ±.001	ANGULAR ±1°	PART NUMBER: BPLF240	
DO NOT SCALE DRAWING			DESCRIPTION: 200 Series Barb Twist to Lock BP Fitting	
DRAWN BY: Bob Elshof	DATE: 06-08-07	SIZE: B	SCALE: NTS	DRAWING NUMBER: 1010407
Now Product Development Manager: Ravi Narayanan		© 2007 VALUE PLASTICS, INC.		REV. SHEET: A 1 OF 1

FOR REFERENCE ONLY